

Automotive Applications HTR Wound Resistors



Ceramic type resistor for HVAC - 3 speed fan control



Reduction of RFI during electrical discharge of petrol engines



Alternators



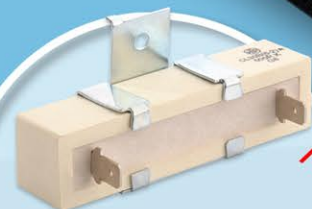
Ceramic type resistor for engine cooling



Ceramic encased resistor for HVAC - rear fan control (single speed)



Instrument Cluster



Traction power inverter modules in electric vehicles